



WELCOME YOU ALL

**EKOSON TECHNOLOGY INDIA
PRIVATE LIMITED**

**Glue, Equipment, Automation,
Solvent, & Consumables**

COMPANY FILE-1



EKOSON TECHNOLOGY INDIA PRIVATE LIMITED is **4 years** old Private company incorporated with MCA (Ministry of Corporate Affairs) on **9th April, 2019**. EKOSON TECHNOLOGY INDIA PRIVATE LIMITED listed in the class of Private company and classified as Non-govt. company. This company is registered at Registrar of Companies(ROC), RoC-Chennai with an Authorized Share Capital of **₹50,00,000** and paid-up capital is **₹1,00,00,000**.

EKOSON TECHNOLOGY INDIA PVT. LTD. is involved in activities such as Manufacture of chemicals and chemical products It is involved in Other wholesale

EKOSON is an Strong Channel of Glue Solution Provider, We are professional Glue Distributor, and Equipment, Auto machine, Solvent Consumable, Laser Machine, Plasma Machine, Glue Dispenser Machine, OMM parameter machine

The Company has **3** directors/key management personal **SHEN XUEPENG, EKOSON TECHNOLOGY INDIA PVT LTD** company.

Ekoson Technology India Private Limited's -
Registered - Email address is -darren@gsolution.com.cn
Registered - Address is , -No. - 40b1, 41b, S.V Chathiram Main Road,
Karanai Village, Thiruvallur –TAMIL NADU – 631402, INDIA.

Current status of **EKOSON TECHNOLOGY INDIA PRIVATE LIMITED** is -
Active.

Warehouse : we have ambient ware house – 3000 sqft.
1.40Deg. – 300 Sqft. Warehouse
2. 2 to 8 -400 sqft. Warehouse

BRANCHES

CHENNAI



THIRUPATI



NOIDA-DELHI



WEARHOUSE

CHENNAI



THIRUPATI



NOIDA-DELHI



OUR MOTTO

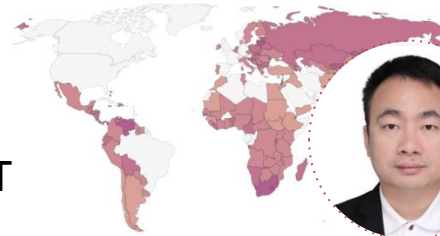
- ✓ **24 Hours Supply**
- ✓ **Delivery Commitment time**
- ✓ **Positive way to approach the customer**
- ✓ **Flexible Plan for client request / order**
- ✓ **Paying great attention to the needs and opinion of customers**
- ✓ **Individualized service can assist only when helping people who are facing multiple barriers work**
- ✓ **The idea is to leave a lasting impression on customer by working with them and assisting them in the best way possible**

WAREHOUSE & CHAMBER





ORGANIZATION CHART



DARRE

General
Manager

Customer Service -Overseas

Sales / Admin-Overseas

Supply Chain Management – Head
Quarters

Purchase Team – China, India



Bell

Customer Service
(HQ)



Terry

India Manager



Annie
H.Q.



Xufan
Purchase - China



Hedy

Customer Service
(HQ)



Miya

Customer Service
(HQ)



Fron

Customer Service
(HQ)



Finpa

Controller



Shashank

HR Executive

Sales Team-India

Technical Team -
India

Logistic Team-India



Thavasiyana
Sales Head -Tamil Nadu



Willchen
Sales Head -New Delhi



Palani
Sales Manager - Tamil Nadu



Vignesh
Serv. Tech -
Manager-TN



David
Logistics Manager - Tamil Nadu



Nirmal Raj
Sales Manager - Tamil Nadu



Amarjeet Singh
Sales Manager - New Delhi



Randi Durai
Sales Manager - Bangalore



Sathiyamoorthy
Sales Manager - Tamil Nadu



Raman
Logistics Manager - Tamil Nadu



Maheswara
HR Manager -Tamil Nadu



Dipanshu
Logistics Support - New Delhi



Surendir
Sales Process - Bangalore

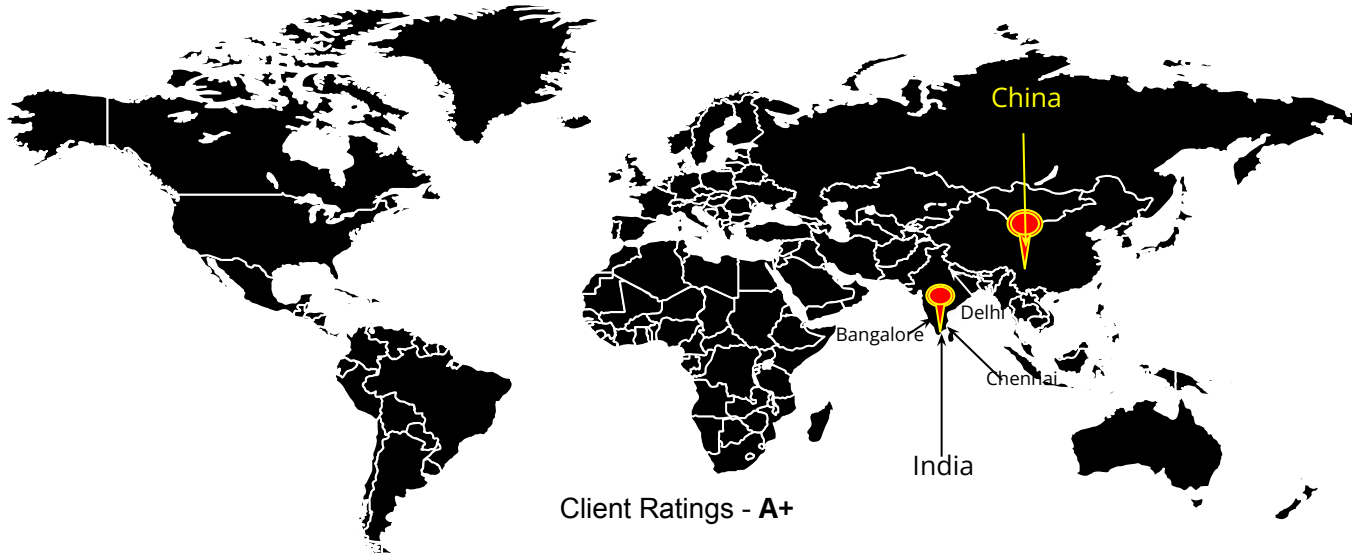


Avnish Chaturvedi
Sales Manager - New Delhi



RAJADURAI RAMADEYAM
Sales Coordinator

OVERSEAS



Clients



EKOSON Product (Equipment list):

| S.No. | Equipment Name |
|-------|--|
| 1 | 1. SMT machines: Fuji NXT, Panasonic NPM, CM602, CM402, Yamaha YSM10, YSM20, YS24, YS12, etc. and various models of Feida |
| 2 | Upper and lower plate machines, docking stations, flippers, cache machines, PCB cleaning machine, intelligent solder paste storage machine, first article detector, etc. |
| 3 | Fully automatic printing machines: GKG, Zhengshi, Hotan Goode, Desen, etc. |
| 4 | Fully automatic online inkjet printer, laser marking machine, FPC laser cutting machine, online milling cutter depanel machine |
| 5 | Various brands of SPI, AOI, reflow soldering, wave soldering, etc. |
| 6 | X-RAY /X-RAY dispensing machine, fully automatic BGA rework station, etc. |
| 7 | Fully automatic stencil cleaning machine, scraper cleaning machine, PCBA cleaning machine and stencil inspection machine |
| 8 | Online IC burner |
| 9 | Electron metallographic microscope, electronic magnifying glass, etc. |

| S.No. | Equipment Name |
|-------|--|
| 10 | Anti-static system |
| 11 | Online glue spraying machine, glue dispensing machine, AB glue dispensing machine. Brand: Hongdahui, |
| 12 | Axis screw locking machine (Brand Rocks) |
| 13 | Plasma cleaning machine (brand Shengding) |
| 14 | Laser engraving machine and related equipment (Brand Ruitian) |
| 15 | FAI testing machine, steel mesh testing machine |
| 16 | OMM detector |
| 17 | CMW 100, CMW500, programmable power supply 66319D, 2306, etc. |
| 18 | Aitexun testing equipment |
| | Automatic Screw machine |
| 19 | Temperature and Humidity Chamber |
| 20 | CLICK RATIO TSTR |
| 21 | Automatic Tin Removal Machine |
| 22 | PCB Cutter |
| 23 | Grinding and Polishing Machine |
| 24 | Metallographic Microscope |
| 25 | Microstar ii |

EKOSON - Partner Machinery list:

| S.No. | Equipment Name | Current Customer | Customer Location |
|-------|--|-----------------------------|----------------------------|
| 1 | Plasma cleaning machine (brand Shengding) | Foxconn, Bharath FIH & Flex | Chennai |
| 2 | Automatic Screw machine | Wistron | Thirupathi |
| 3 | Glue dispensing(underfill, UV, Hot Melt Glue & Thermal Gel) | DBG, OEL, Wintech | Noida, Thirupathi |
| 4 | Temperature and Humidity Chamber | Avary & Qtech | Chennai, Noida |
| 5 | CLICK RATIO TSTR | Wistron & Pegatron | Bangalore, Chennai |
| 6 | Automatic Tin Removal Machine | Wistron,Pegatron & Lenovo | Bangalore, Chennai & Noida |
| 7 | PCB Cutter | Wistron & Delta | Bangalore & Hosur |
| 8 | Grinding and Polishing Machine | Wistron & Delta | Bangalore & Hosur |
| 9 | Metallographic Microscope | Wistron & Delta | Bangalore & Hosur |
| 10 | Microstar ii | Wistron & Honhai | Bangalore, Chennai |
| 11 | Anti-static system | Salcomp | Chennai |
| 12 | Laser engraving machine | Neolync | Thirupathi |
| 13 | FAI testing machine, steel mesh testing machine | Neolync | Thirupathi |
| 14 | OMM detector | Foxconn | Chennai |

EQUIPMENT



Automatic Spray Fixture Cleaning Machine



Automatic Stencil Cleaning Machine



Automatic PCB Cleaning Machine



Automatic Nozzle Cleaning Machine



Programmable Constant Temperature and Humidity Chamber



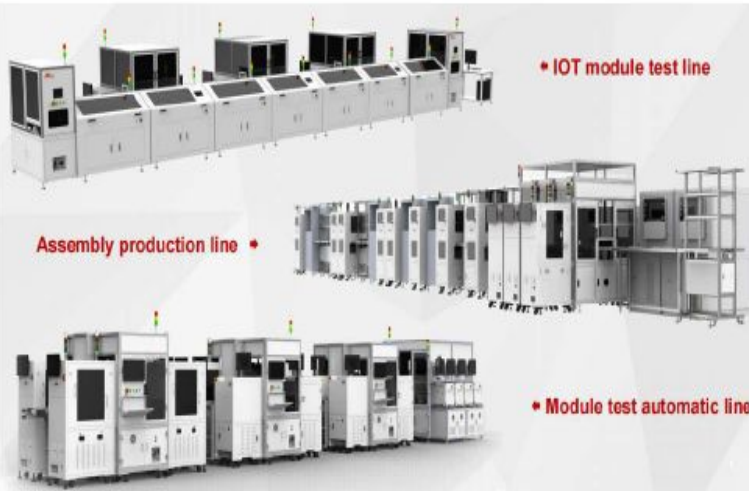
Plasma Cleaning Machine



Glue Dispenser



Automatic Glue Inspection Machine



Automatic Grinding and Polishing Machine



Grinding and Polishing Machine



Metallographic Microscope



Durometer

SOLVENT & CONSUMABLES:



Water-based Solvent



acrylic-based resin & Hardener



Ribbon



Sand paper



Alumina powder



Polishing lint



Anti-static gloves



Anti-static clothing



Yellow electrostatic finger cover



Anti-static slippers



Wiping paper



Solder paste



Flux



Replaceable stainless steel tweezers



Electrostatic wrist strap



Ion fan



Nitrile gloves



Cutting machine earplug



Acticarbon mask



Steel Red

LASER MACHINE & PLASMA MACHINE

Featured Products

Under the guidance of professional and refined business philosophy, R-TEK team is constantly innovating with a spirit of constant focus and continuous improvement.

| Online Laser Marking Machine | Laser Cutting Machine | Laser Welding Machine | Intelligent Solder Paste Storage Machine | SMT Intelligent Machine |
|------------------------------|-----------------------|-----------------------|--|-------------------------|
|------------------------------|-----------------------|-----------------------|--|-------------------------|



Online full automatic ink-jet...



Oversized laser marking machine..



S6 Fiber laser marking machine



Intelligent solder paste storage...



Full Automatic Loader/unloader..



Magazine loader/unloader type



Offline double paltform depaneli...



Offline single platform cutting...



Visual depaneling machine with...



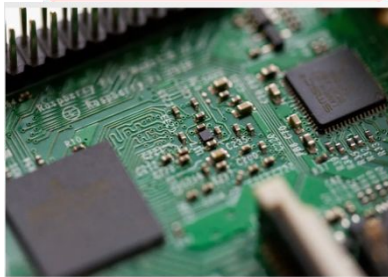
Online laser cutting machine



Laser soldering paste machine

APPLICATION INDUSTRY

Plastic Hardware/Others



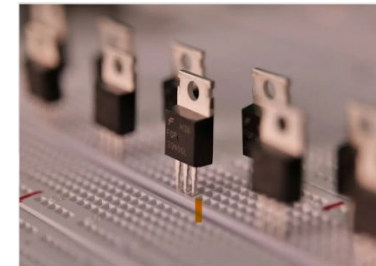
SMT



3C Home Appliances



Semiconductor



Read more for detailed equipment used



Read more for detailed equipment used



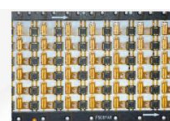
Read more for detailed equipment used



Read more for detailed equipment used



Read more for detailed equipment used



Read more for detailed equipment used



Read more for detailed equipment used



Read more for detailed equipment used



Read more for detailed equipment used



Read more for detailed equipment used



Read more for detailed equipment used



Read more for detailed equipment used



Read more for detailed equipment used



Read more for detailed equipment used



Read more for detailed equipment used



Read more for detailed equipment used

PLASMA MACHINE

Atmospheric Plasma Treatment System Vacuum Plasma Treatment System DBD Plasma Treatment System



SPV-100
Vacuum Plasma Machine



SPV-24M
Microwave in-Line Vacuum Plasma
Machine



SPK-800S Wide Width RF Plasma
Machine



SPA-5800 Atmospheric Plasma Cleaner Machine

Case application



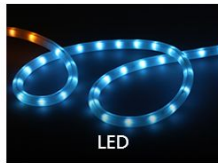
6C



FPD



Semiconductors



LED



Lithium batteries



PCB

Scientific Research



Cell phone manufactu



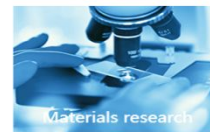
Surface treatment



Chemical industry



Glass manufacturing



Materials research



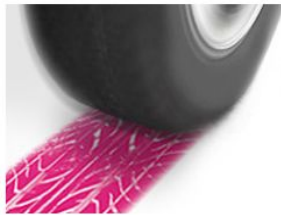
Pressure measurement film -Prescale-

This is the film that can measure pressure. Pressure and pressure distribution, which could not be visually observed in the past, can now be easily confirmed.



Prescale Sheets make pressure measurement more readily accessible.

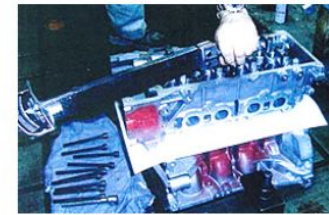
Prescale Sheets are a version of Prescale that are pre-cut into easy-to-use sizes. It is recommended for first-time users and for small-scale applications. To cover a wide pressure range (0.2 to 300 MPa), we supply six types of Prescale Sheets.



Measure tire pressure



Measure the pressure distribution of cleaning polish against liquid crystal panels



Measure the pressure between cylinder heads and cylinder blocks

| Types | Measurable pressure range [MPa] 1MPa \approx 10.2kgf/cm ² | | | | | | | | | | Prescale | Prescale Sheets | Classification |
|----------------------------------|--|------|-----|-----|-----|-----|----|----|-----|-----|---------------------------------------|--|-----------------|
| | 0.006 | 0.05 | 0.2 | 0.5 | 0.6 | 2.5 | 10 | 50 | 130 | 300 | Product size width(mm) x length(m) | Product size width(mm) x length(mm) | |
| Ultra Extreme Low Pressure (5LW) | | | | | | | | | | | 320 x 2 | — | Two-Sheet Type |
| Extreme Low Pressure (4LW) | | | | | | | | | | | 320 x 3 | — | Two-Sheet Type |
| Ultra Super Low Pressure (LLLW) | | | | | | | | | | | 270 x 5 | 270X200 (5 Sheets) | Two-Sheet Type |
| Super Low Pressure (LLW) | | | | | | | | | | | 270 x 6 | 270X200 (5 Sheets) | Two-Sheet Type |
| Low Pressure (LW) | | | | | | | | | | | 270 x 10 | 270X200 (5 Sheets) | Two-Sheet Type |
| Medium Pressure (MW) | | | | | | | | | | | 270 x 10 | — | Two-Sheet Type |
| Medium Pressure (MS) | | | | | | | | | | | 270 x 10 | 270X200 (5 Sheets) | Mono-Sheet Type |
| High Pressure (HS) | | | | | | | | | | | 270 x 10 | 270X200 (5 Sheets) | Mono-Sheet Type |
| Super High Pressure (HHS) | | | | | | | | | | | 270 x 10 | 270X200 (5 Sheets) | Mono-Sheet Type |

OUR SERVICE

After-sales

- 20+ service branches
- 100% after-sale telephone return visit
- After-sales stand by all the time, and recovery any issues at the first time
- 100% genuine original parts
- Adequate inventory of spare parts
- Remote operation instructions at any time

Pre-Sales

- 7*16 hours online service
- One to one professional pre-sales consultation
- Guidance video for reference
- Workpiece sample making freely
- 100% professional plan formulation
- Lastest news of company



7*16 hours online service



One to one professional pre-sales
consultation



Guidance video for reference



Workpiece sample making freely



100% professional plan formulation



Lastest news of company

THANK YOU